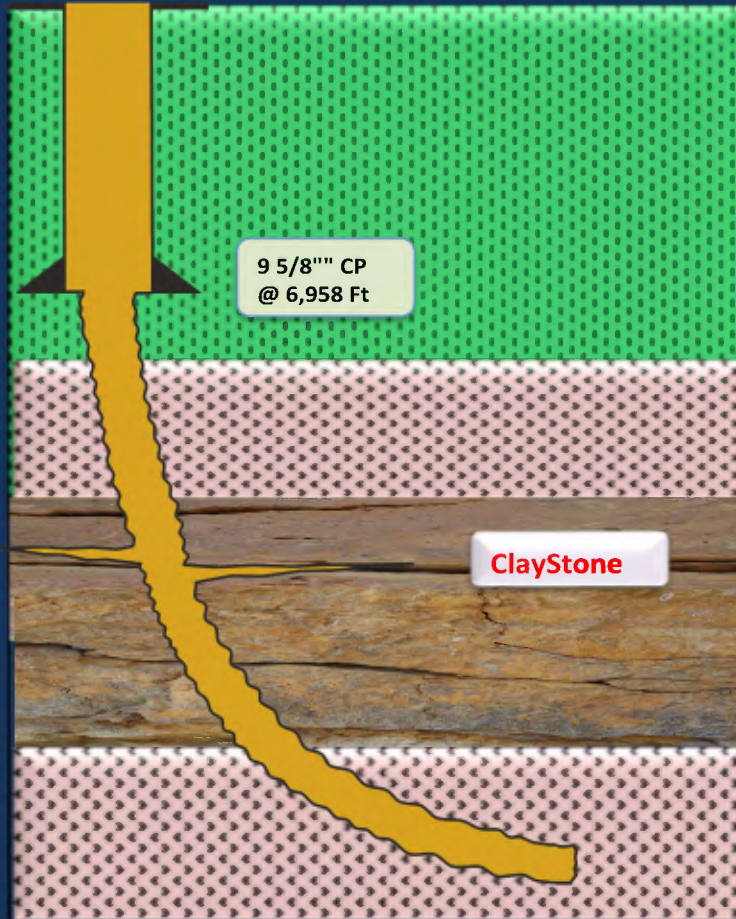




SOLU-SEAL TACKLE TIRESOME LOSSES AT 9,218 FT - Offshore Sulawesi, Indonesia



The Challenge

A seepage / partial mud loss must be stopped before logging the hole can be done in the 8½" hole at 9,218 ft. The 8½" open hole interval to log was 2,260 ft. **Determining the loss point of a seepage loss in a long open hole section was not easy.**

The Action

Spotted **40 bbl of 95 ppb SOLU-SEAL** at 9,218 ft, followed by a hesitation squeeze. Had to pump twice the SOLU-SEAL pills and hesitation squeeze before the losses were controlled.

The Result

After spotting two SOLU-SEAL pill, the hole was static to proceed with the logging operation. The whole SOLU-SEAL application process was conducted with the direct supervision of the operator. The job was successfully conducted by the Operator with no Drilchem engineer on the rig.