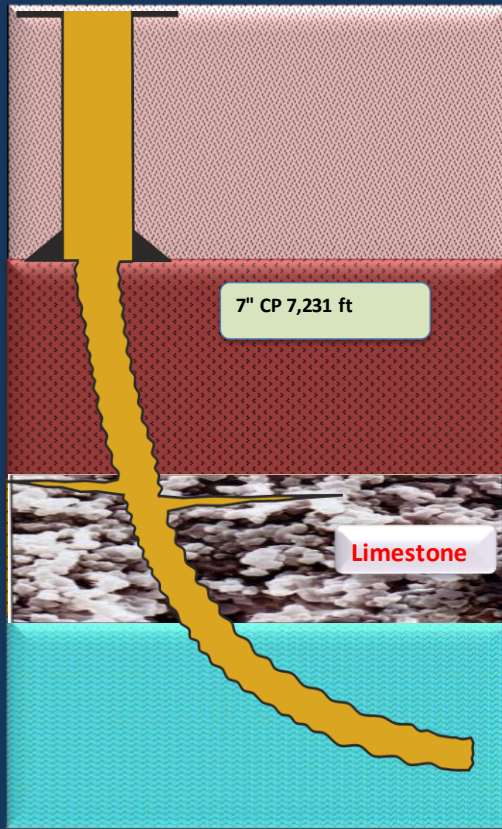


Expected Total Loss at Offshore Madura Strait , INDONESIA



The Challenge

Madura Strait has common problem with Total Losses issue. Many offset wells has a similar case. Estimate losses will encountered at 6 1/8" section at 7,241 ft - 7,752 ft MD. Operator has a strategy to prevent the losses with proactive treatment

The Action

Once started drilling 6 1/8" section, DRIL-EZY with 5 ppb at active system and Sweep Hi Vis with 10 ppb DRIL-EZY every 2 stands . Spotting Pill material stand by at RIG site without pumping to the well

The Result

Drilling was continued with good ROP without any losses recorded Geologies confirmed at casing point, no losses recorded and hole was stable.